

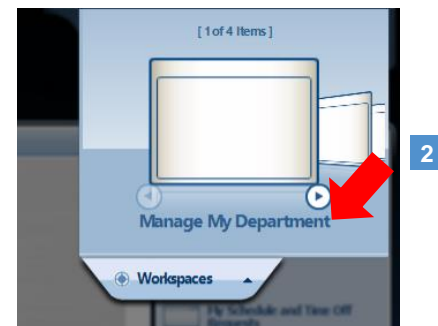
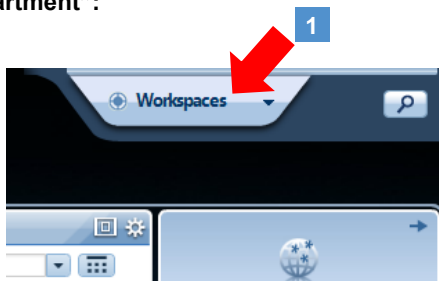
The ECU Kronos Team is excited to announce ECU's Kronos Workforce Central (WFC) environment will be upgrading to version 8.1.7. on November 5th at 6PM. This upgraded version will no longer use Adobe Flash, as most internet browsers will be discontinuing support of Adobe Flash by the end of the calendar year. Kronos users will find that Internet Explorer, Firefox, Safari and Chrome are still compatible with Kronos 8.1.7.

This Kronos upgrade does not modify your department's adoption or usage of Kronos. Kronos remains the university's system of record for time, attendance and leave. Your existing, established Kronos SOP document and departmental expectations, including payroll approval and sign-off deadlines remain in place and unchanged. The impact of this upgrade to departments will be minimal, with only small visual changes in the User Interface.

### Previously, to access Genies and "Manage My Department":

1 Click **Workspaces** to open the carousel.

2 Select the **Manage My Department** Workspace or other items per user security access.



### Now to access Genies and "Manage My Department" in Kronos 8.1.7:

1 Click the **+** sign.

2 Select **Manage My Department** or other items per user security access.

